

COMPRESSOR CONTROL PANELS

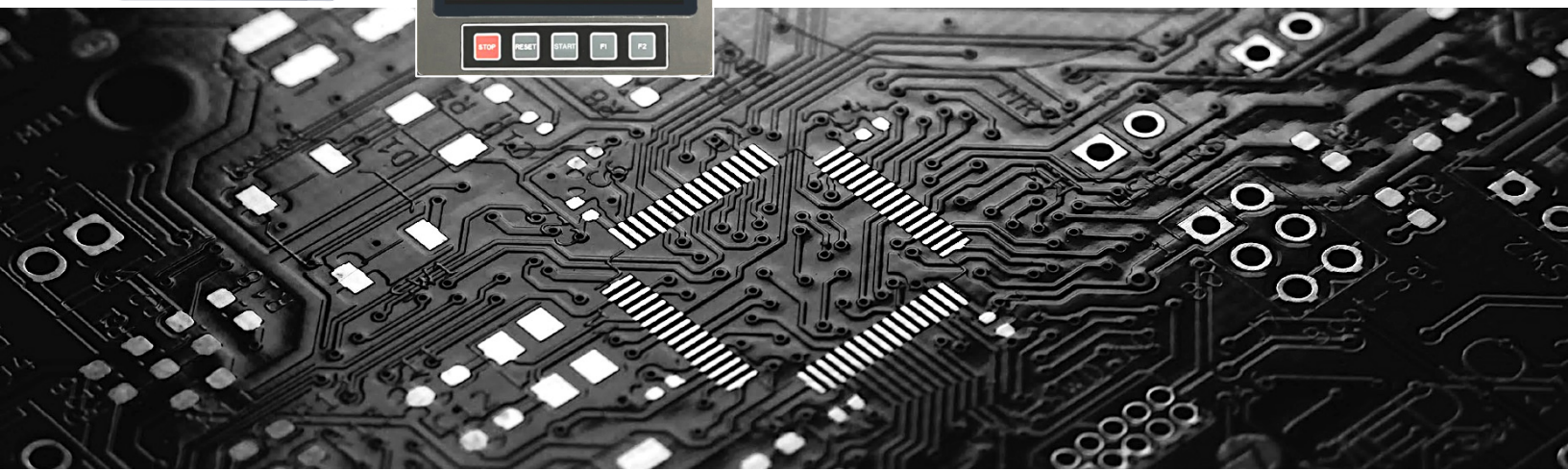
- Engineered panels for compressors, engines, motors and processes
- Panels available from the simplest shutdown panel to full-authority process control
- Comprehensive, custom engineering design services
- Altronic product quality built-in
- Worldwide support available through the Altronic distribution network
- Available with hazardous area certification

In the 1970s, Altronic began development of instrumentation and control products. The pioneering, patented Altronic digital annunciator transformed oil-field panels bringing them into the electronic age. Today Altronic instruments and controls are among the most advanced and sophisticated available.

Using these proprietary controls, Altronic is uniquely positioned to deliver control panel solutions for both packager (OEM) and end-user customers. Customers for control panels benefit from Altronic's in-house panel engineering design expertise as well as its global distribution and service network to meet any application requirement. The panel manufacturing plant is located next door to Altronic's main facility in Girard, Ohio allowing for easy interface with Altronic sales, service and product engineering personnel.

Altronic panels are typically based on the Altronic line of digital annunciators and advanced controllers. These include the basic two-digit DD annunciator and the more advanced DE-1550, DE-3000 and DE-4000 controllers. These products - combined with other appropriate Altronic instruments and controls - monitor, protect and control natural gas engines and compressors and other vital industrial equipment. Altronic can also offer conventional PLC-based panels combined with its own line of PLC+ controls which offer unique interfaces to the main PLC for speed measurement, governing, and detonation and vibration monitoring.

Altronic panels can be supplied with Class I, Division 1 or 2 certification where required.



DD / DE-1550 Panels

For smaller compressor packages, Altronic offers panels based on the DD annunciator or the DE-1550 integrated controller. These panels offer powerful features in an economic package.

The DD-40NTV offers the simplicity of a 2-digit status and fault indication as well as a built-in tachometer, hourmeter, under and overspeed protection and pre/post lube functions. Up to 40 discrete points can be monitored and protected. These panels typically use other Altronic instrumentation for temperature and pressure monitoring and display.

The DE-1550 offers a 128x64-pixel graphics display of operating parameters. With 25 inputs, 12 outputs and 2 PID control outputs, sophisticated process control is available for smaller compressor packages. In addition, the DE-1550 provides an integrated speed governor and air/fuel ratio control for stoichiometric fuel-mixture engines.

As with all Altronic panels, other devices are incorporated to cover all user requirements.



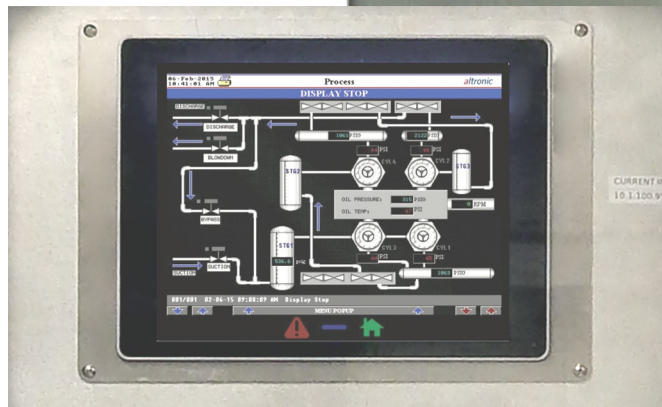
DE-3000 / 3000+ Panels

The Altronic DE-3000 / 3000+ panels are the workhorse of the line featuring comprehensive monitoring and process control. These panels can be built on a custom one-off basis or to a standard configuration to fit multiple applications.

DE-3000 panels offer up to 62 inputs, 24 outputs, PID control and graphing capabilities. Ease of system setup and configuration set these panels apart from PLC-type controllers. An intuitive Windows™-based terminal program eliminates the need for knowledge of ladder-logic or other functional programming languages. ModBus-RTU communications are fully supported for remote monitoring and control applications.

The DE-3000 system has a 128x64-pixel graphics display of operating parameters with four background colors indicating operating mode. The DE-3000+ system uses an integrated 10-inch MIDAS HMI for the most advanced user interface.

DE-3000 panels are available for Class I, Division 1 or 2, Group D hazardous areas.



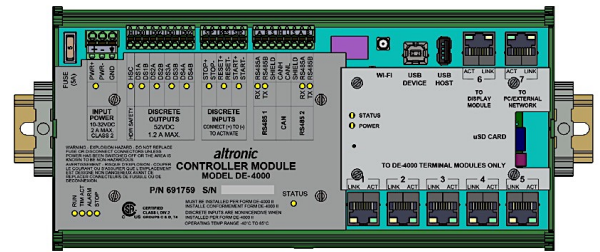
DE-4000 Panels

The DE-4000 is Altronic's most advanced controller. This comprehensive controller offers the capabilities of a PLC with the user-friendly programming and operation typical of Altronic control products.

The DE-4000 panel can be furnished with 32 to 170 configurable inputs and 16 to 64 outputs. It includes user-defined auto-start, 4-20 mA PID outputs (up to 20), data logging, the ability to interface to OEM control systems and an 8-inch color touchscreen HMI (pictured here).

These panels can be applied to either separable or integral compressors or other complex process operations. Advanced programming allows for easy implementation of custom algorithms and logic.

DE-4000 panels have modern Ethernet communications, CAN and RS-485 ports and an integrated WiFi radio. They are available for Class I, Division 1 or 2, Group D hazardous areas.



PLC Panels

Altronic offers custom PLC-based panels, scalable to any size or complexity the user may require. These feature a color-screen HMI for operator interface.

A unique offering with Altronic PLC panels is the PLC+ line of instruments designed for specific engine/compressor parameters. These include modules for engine speed, governing, detonation and vibration monitoring.

These panels may also contain other Altronic instrumentation for specific display of critical process information. The Altronic panel engineering team can put together a design to meet any user application. Furthermore, Altronic's distribution system provides support and spare parts availability worldwide.



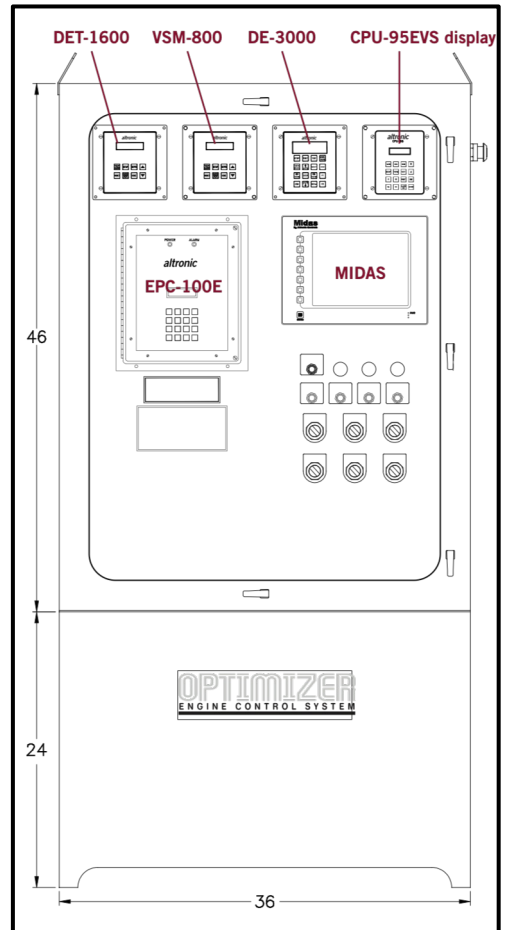
PLC+ Module



Special Application Panels

Altronic offers a range of special application panels. One type offers upgrade options for specific OEM applications such as compressors powered by Caterpillar G3500 and Waukesha VHP engines. Ignition upgrades and controls that interface to OEM systems are part of these comprehensive packages.

Another class of special application panels provides emissions controls for existing natural gas engines. These include any of the comprehensive Altronic line of air-fuel ratio controls including the ubiquitous EPC series and the latest AFR-500 product.



ALTRONIC

A Member of the HOERBIGER Group

712 Trumbull Avenue / Girard, Ohio 44420

(330) 545-9768 / Fax: (330) 545-3231

www.altronic-llc.com / Email: sales@altronic-llc.com

Form ALT PANELS 8-22 ©2022 Altronic, LLC

